



# Ampliroll®

## 20,000 POUNDS

### AL 100 SERIES



#### Why buy a HookLift?

Do you have trucks that are not always being used?  
Do you have a difficult time finding quality drivers?  
Is there a piece of equipment you could use, but  
can't justify adding another truck?

**It's Multi-tasking for your truck.  
The possibilities are Infinite.**

With an Ampliroll® you can do just about anything.

#### Deliver — Load — Dump

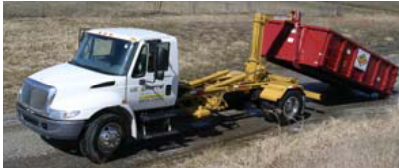
#### FEATURES

- **Sliding Jib** gives you greater range of body lengths and optimal weight distribution.
- **Twin Pivot** allows you to dump a uniform pile of material.
- **Dual Cylinders** gives greater stability while dumping and loading.
- **Safely** operated from the drivers seat.
- **Dock Level** loading and unloading.
- **Double** your payload by pulling another body on a trailer.
- **Maneuverable** to operate, the container can be loaded within a **60 degree** arc.
- **Spot** the container exactly where you want it, by pushing it into place with no damage.
- **Quickly** loads a body in less than one minute.
- **Investment** that will outlast your truck, Amplirolls® will last over **25 years**.
- Meets all highway safety standards.



The Ampliroll® HookLift was invented in 1969. Our process of laser cutting and robotic welding enables us to provide you with a complete line of hooklifts, that eliminate the use of **SHIMS** and **WEAR PADS**.

***Ampliroll® has been imitated  
but never duplicated.  
Compare the difference before you buy.***



Ampliroll® Model	AL 100SS-12	AL 100S-15	AL 100L-16
<b>Lifting Capacity</b> (including container)	20,000 lbs	20,000 lbs	20,000 lbs.
<b>Shipping Weight</b>	2408 lbs.	2408 lbs.	2417 lbs.
<b>Dump Angle</b>	54 degrees	54 degrees	54 degrees
<b>Cab to Axle</b>	96 to 120 inches	120 to 138 inches	126 to 150 inches
<b>Over-All Length</b>	146 inches	162 inches	174 inches
<b>Body Length</b>	10 to 13 feet	10 to 16 feet	11 to 17.5 feet

**Hydraulic Specifications:**

Pump - Axial piston, 5,700 psi, 11 GPM @ 1,200 RPM, SAE B, direct mount  
 Controls - Low pressure hydraulic or air in cab  
 Reservoir - 7 gallons  
 Filter - 10 micron, return line with replaceable cartridge  
 Maximum operating pressure - 5,000 psi  
 Hoses, tubes & fittings all JIC/SAE specifications

**Steel: Special Alloy**     **ASTM A 572** in jib, central arm and tilting frame

**Safety Devices:**     Safety valve prevents jib operation during dump mode.  
 Counter-balance valve to hold cylinder if hose breaks.  
 Automatic locking device for dump mode.  
 Slide through container locks.

**Truck Requirements:**     GVWR - 26,000 to 35,500 lbs.  
 Front Axle capacity - 8,000 to 10,000 lbs.  
 Rear Axles capacity - 18,000 to 23,000 lbs.

**Notice:** Longer containers may not comply with I.C.C. bumper regulations and can effect dump angle.

Inside Controls



Optional Hydraulic Adjustable Jib 36" to 54"



Distributed by:



**marrel**  
CORPORATION

4750 14 Mile Road NE  
 Rockford, MI 49341  
 Phone: (616) 863-9155  
 Fax: (616) 863-9177  
 Toll Free: (866) 822-3580  
 E-mail: ampliroll@amplirollusa.com  
 www.amplirollusa.com